

SS-2000 Former

THREE-IN-ONE CUT/FORM WORKCENTER

Cut and Form to Stand-Off, Snap-In, or Layover Trim Caps, Transistors, LED's, IC's, to Length

THREE DIE POSITIONS IN ONE MACHINE

- Choose from an Assortment of Cutting and Forming Dies
- Two Positions for Cutting and Forming
- One Position for Cut Only
- Fully Pneumatic Machine Installs in Minutes

VARIETY OF DIES INCREASES PRODUCTIVITY

- Choose Two Cutting and Forming Dies from a Large Assortment
- Stand-Off, Snap-In, or Layover Form Dies Available
- Included RS-U Trim Plate Features a Heavy Duty Cutting Blade



The new, unique, **SS-2000 Manix Radial Lead Former** cuts and forms all types of radial components at speeds up to 1,000pph. The system includes three positions, two for cut and form dies, and one for cut only.

Cut all styles and types of radial, axial, and IC components to a specified length on one trim die, and cut and form transistors, capacitors, LEDs and other radials on the other two dies. Choose from snap-in, to stand-off, to layover forming dies. Positions one and three accept forming dies while the middle position houses the unique trim die assembly.

The operator simply inserts a component into the correct position and depresses the easy action foot pedal. The die actuates and performs the necessary operation. Cutoffs fall safely into the scrap bin, while the formed part is removed.

The system includes the base unit, a foot pedal, a control panel with a position selector switch, the Universal RS-U trim plate, and two cutting and forming dies of your choice. Choose from a variety of standard dies including, stand-off, snap-in, layover or the new combination snap-in/standoff die.

All forming dies interchange in a matter of minutes, although with three positions, changing is virtually eliminated.

Speed up your production by online forming of your components. Due to its compact size and versatile performance, the **SS-2000** allows component forming on the assembly line, eliminating the need for a separate component preparation area.

You pick and choose the two dies that fit your needs. Custom dies are available and most standard dies are stock.



410 Pike Road • P.O. Box 1023 • Huntingdon Valley, PA 19006 • USA
Phone (215) 953-9797 • Fax (215) 953-9399
Email: sales@manixmfg.com • Visit us at: www.manixmfg.com

SS-2000 Former

PRINCIPLE OF OPERATION

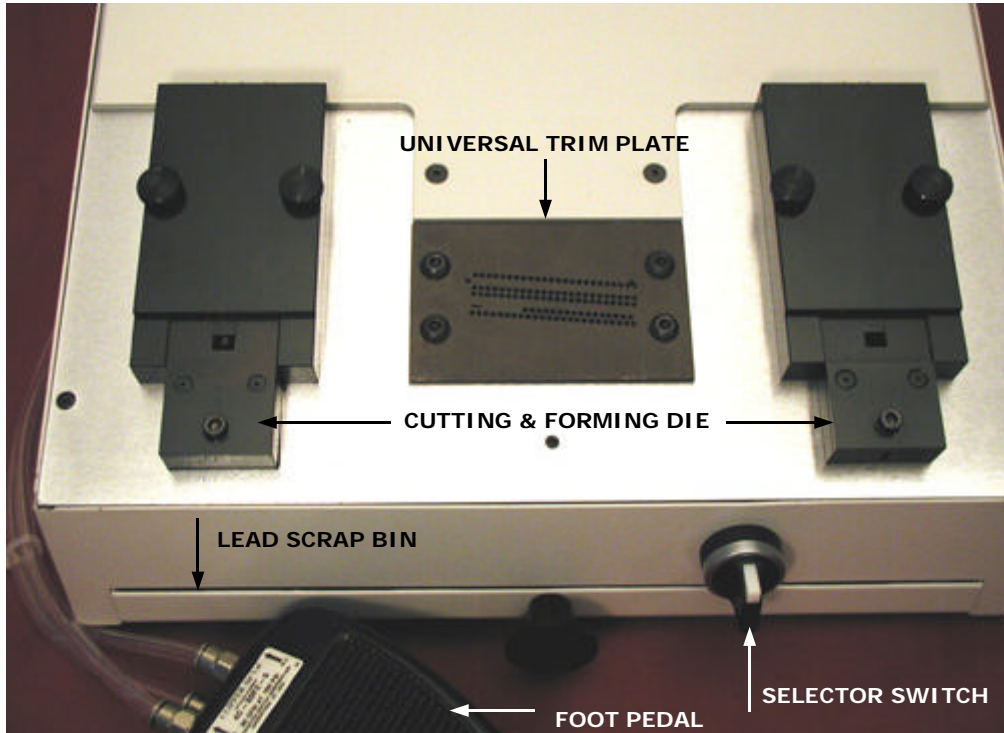
The **SS-2000** consists of a pneumatically powered base unit, two cutting and forming dies of your choice, one universal trim plate, and a foot pedal. To begin operation, the operator chooses which component is to be formed, and

turns the selector switch to the correct position. The operator hand loads the component into the die and depresses the foot pedal. The system cuts and forms the component, or cuts only the component to the correct length. Scrap cutoffs

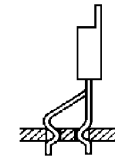
are deposited into a collection bin. All dies are constructed of high-quality tool steel and hardened and blackened. Choose from a variety of standard dies, or Manix can fabricate a die to meet your custom specifications.

SPECIFICATIONS

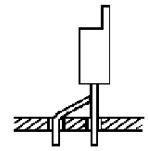
Choose Two (2) Cutting and Forming Dies



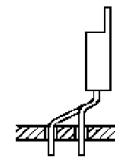
Dimensions:	14"L x 12"W x 7.5"H
Weight:	55 Lbs.
Pneumatic Supply:	80 PSI, Dry Air
Electric Supply:	None Required
Components:	Loose Radials



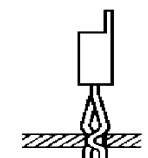
TO-220 Staggered Snap-In M867-3



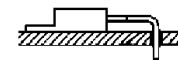
TO-220 Staggered Stand-Off M861-3



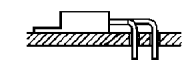
TO-220 Staggered Stand-Off w/Offset M861-3-Off



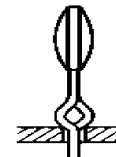
TO-220 Inline Snap-In M868-3



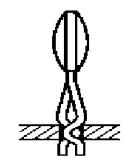
TO-220 Inline Layover M866-3



TO-220 Staggered Layover M862-3



Capacitor Stand-Off M865



Capacitor Snap-In M864



SMT Form M869



Flush Mount Snug-In M870

SS-2000: Pneumatic cutting and forming system with foot pedal. Includes the RS-U universal trim die and two cutting and forming dies of your choice. Custom dies available upon request to meet demanding specifications.

Choose from the following cutting and forming dies.

- M861: Standoff cut and form tool.
- M862: Staggered layover cut and form tool.
- M863: Capacitor combination snap-in/standoff cut and form tool.
- M864: Capacitor snap-in cut and form tool.
- M865: Capacitor standoff cut and form tool.
- M866: In-line layover cut and form tool.
- M867: Staggered snap-in/stand-off cut and form tool.
- M868: In-line snap-in/stand-off cut and form tool.
- M869: SMT reflow cut and form tool.
- M870: Capacitor flush mount snug-in cut and form tool.

ORDERING INFORMATION



410 Pike Road • P.O. Box 1023 • Huntingdon Valley, PA 19006 • USA
Phone (215) 953-9797 • Fax (215) 953-9399
Email: sales@manixmfg.com • Visit us at: www.manixmfg.com