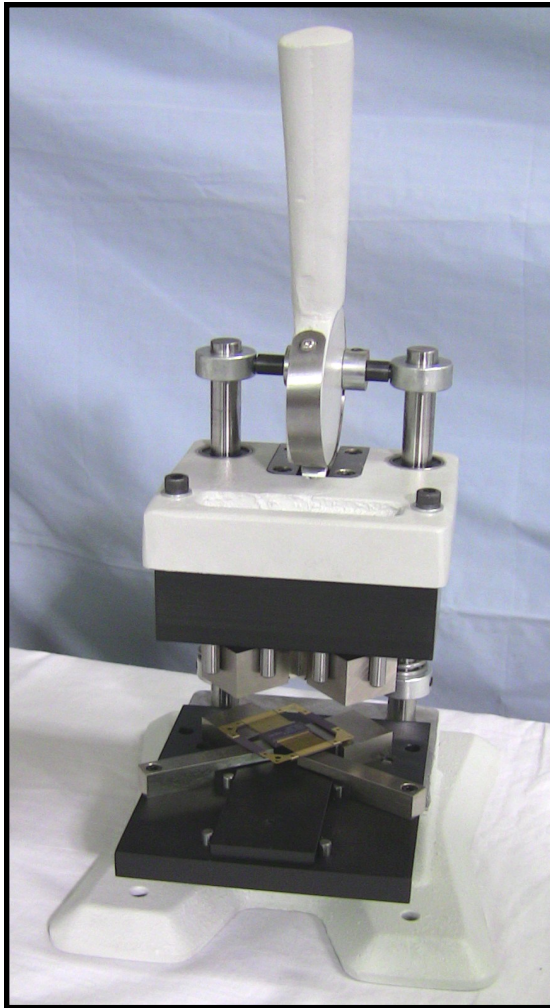


FP-TBC TIE BAR REMOVAL TOOL

SNAP-OFF CERAMIC TIE BARS FROM FLATPACK COMPONENTS WITHOUT STRESS OR DAMAGE TO THE LEADS OR BODY



GENERAL DESCRIPTION

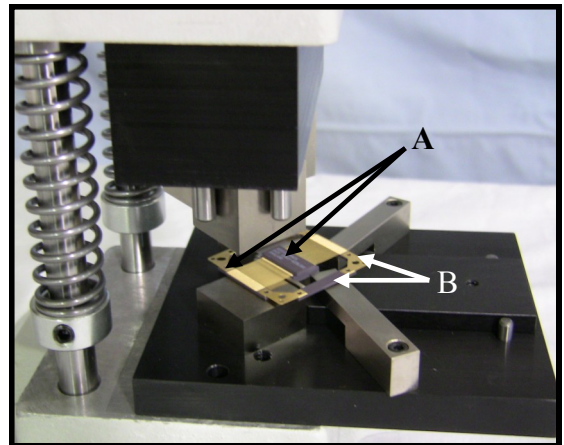
Safely and easily remove ceramic tie bars from flatpack components using the new **FP-TBC** adjustable tool from Manix Manufacturing, Inc.

The tool is easy to use and is adjustable for body size, lead count, and tie bar length. Eliminates damage to the component usually associated with manual tie bar removal.

- Snap-off ceramic tie bars.
- Adjust for varying body sizes and tie bar lengths.
- Processes one corner (two sides) at a time.
- Spring loaded clamps adjust for ceramic tie bar thicknesses and eliminates damage to the component body or leads.

METHOD OF OPERATION

- Place flatpack into component nest and slide up to snap-off tooling. Visually align ceramic snap-off point to bottom tooling
- Adjust lead guides under back end of component.
- Lower handle to remove tie bars. Rotate component and lower handle to process other corner.



 **MANIX**
MANUFACTURING, INC.

1560 Loretta Avenue • Feasterville, PA 19053 • USA

Phone (215) 953-9797 • Fax (215) 953-9399

Email: sales@manixmfg.com • Visit us at: www.manixmfg.com